



VePAL LX100+ Handheld LAN Test Set

Network testing simplified

VeEX™ VePAL LX100+ is a next generation test solution for networks supporting Triple Play services.

- Intuitive presentation of measurements with test graphics
- High resolution, anti-glare color touch-screen viewable in any lighting conditions fitted with protective cover
- Robust, handheld chassis packed with powerful and flexible features for demanding environments and test conditions
- Optimized for field engineers or technicians installing and maintaining networks enabling triple play services
- USB memory stick and FTP upload support for test result storage/file transfer. Software upgrade by USB memory stick
- Maintain instrument software, manage test configurations, process measurement results and generate customer test reports using included ReVeal™ PC software
- Extend field testing time using interchangeable LiIon battery pack/s. Greater battery autonomy provided in standby mode
- Advanced IP connection tests; Ping, trace route, ARP Wiz, web browser, and FTP upload/download
- NetWiz cable diagnosis with network statistics
- Optional VoIP call emulation and MOS performance analysis
- Optional WiFi Wiz site survey with internet connection test
- IPv4 and IPv6 Support



LAN Expert

Advanced IP testing

Complete IP verification is possible using either the ADSL or Ethernet test ports. Considering that all Triple Play services are IP centric, a powerful and comprehensive set of IP test capabilities is no longer considered a luxury or a "nice to have" feature. Technicians need to verify network connection during installation and/or service restoration, and thus rely on features such as Ping test, Trace Route, ARP, Web browser, and FTP upload/download to get the system "up and running".



IPTV service verification

Designed and optimized for technicians turning up IP video service. Transport stream analysis encompasses data/video/audio bit rates and Program Identification (PID) mapping. Packet jitter and loss, IGMP latency (channel zapping), PCR statistics and Viewer function complete the Video Quality of Service (QoS) application suite.

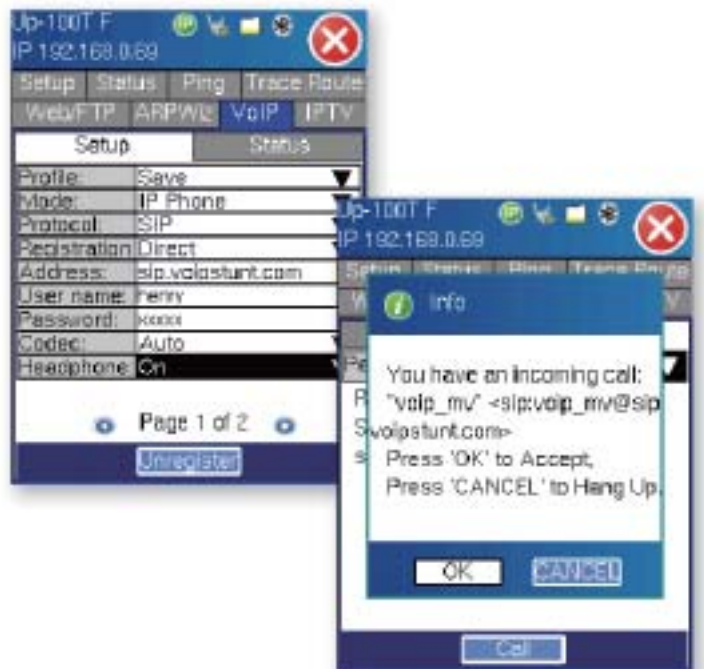
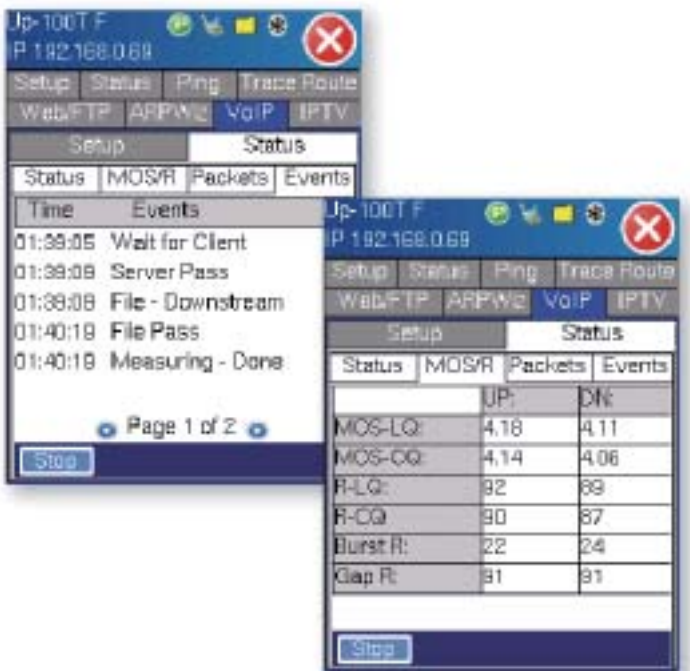


Voice over IP testing

Take advantage of the two separate software options offering different test methods to verify and provision your VoIP network. Being able to test over the Ethernet and/or ADSL test interface ensures that the technician has all bases covered when confronted with CPE related problems.

The VoIP Expert generates industry standard wave files to verify MOS and R-Factor values of upstream and downstream paths and includes QoS measurements like packet jitter, packet loss, and delay.

The VoIP Call Expert emulates an IP phone and can place and receive calls using SIP or H.323 protocols. Comprehensive Codec support and call destination options verify voice encoding and translation provisioning. Real time evaluation of subjective voice quality (MOS and R-factor) is made possible using the patented Telchemy test method which has been integrated into all VePAL test sets.



Net Wiz

Ethernet network installation simplified using this basic, yet powerful feature. A built-in TDR identifies distance to short, distance to open, wire cross, and other anomalies associated with CAT-5 structured cabling. "Sniff" the network using the one-touch discovery feature - Identify routers, gateways, printers, PCs and other devices connected to the network within seconds.



WiFi Wiz

All VPAL products adopt an by support USB Wifi adaptor to make 802.11 b/g Wireless installations a simple task. Scan for existing and available networks or perform signal strength and quality measurements to determine the best location for a new Wireless Access Point.

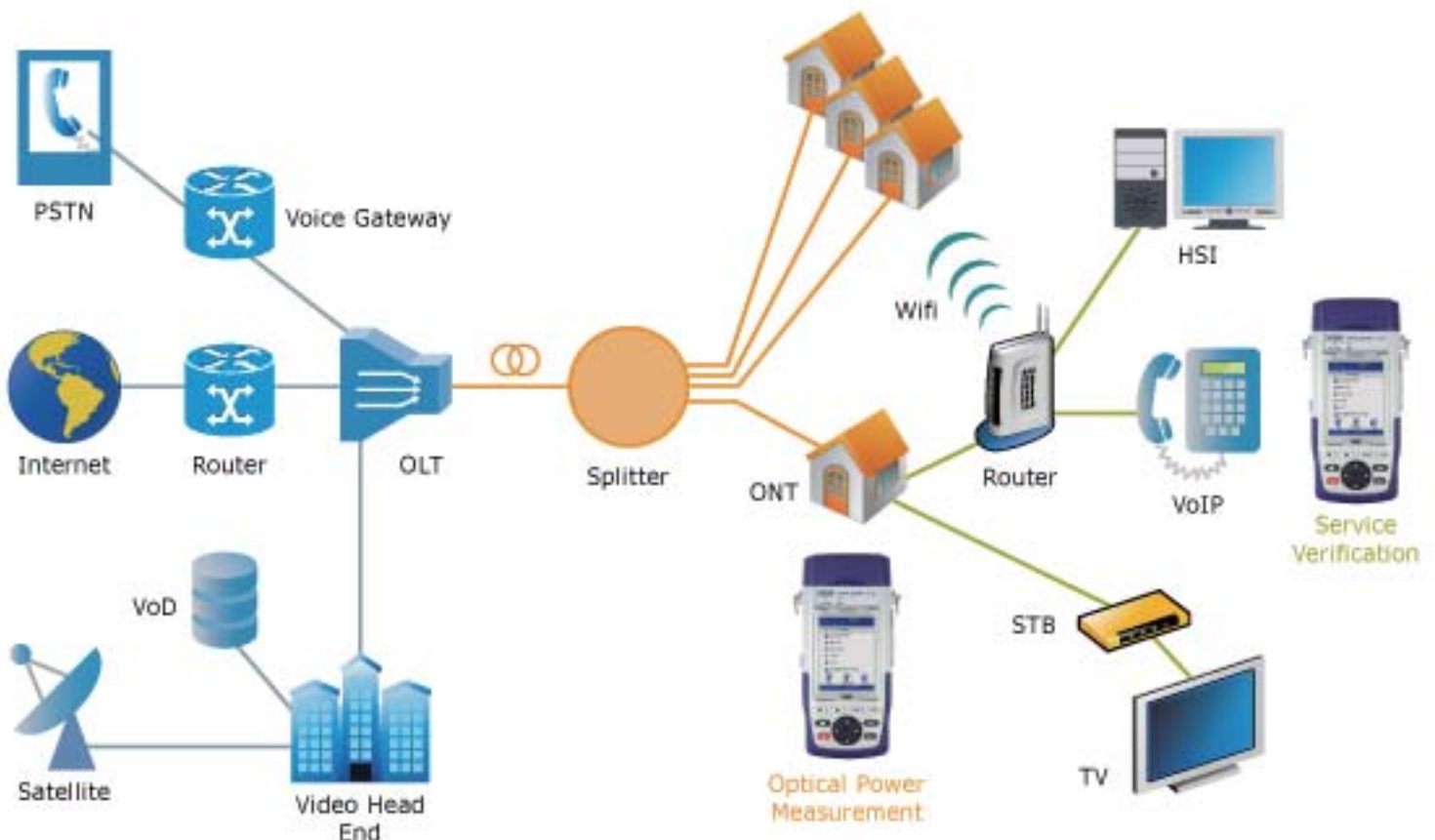
The IP Ping capability finally ensures the wireless network is properly installed and configured.



PON Applications

With its optional Optical Power Meter, the LX100+ is the ideal tool for FTTH Networks. It can verify the physical layer as well as triple play services in one compact unit.

The Advanced PON Power Meter functions allows in-service measurement of bi-directional signals between OLT and ONT with an industry standard 2x2 optical coupler.



Specifications

Advanced IP Test Suite

Ping, trace route, ARP wiz, FTP/Web tests. These tests are done via the chassis 10/100-T port

VoIP Expert

Provides VoIP Metrics

- MOS and R-factor measurement
- Packet Statistics: packet loss, jitter, delay

VoIP Call Expert

VoIP Call setup with VoIP USB adaptor

Supports SIP and H.323 Protocol

Codec: G.711U, G.711A, G.723, G.729, Auto

IPTV

Provides true STB emulation

Supports IGMP/RTSP signaling, MPEG2/4, H.264 encoding, RTP/VC1/MPEG-TS transport streams

Packet Statistics: packet loss, jitter, delay, PID mapping

Video/Audio rates

Channel zapping for quick and complete installation check

WiFi Wiz

Supports IEEE 802.11 b/g

SSID detection, Infrastructure, Ad-hoc, and encryption

Signal strength and quality site survey

IP connection verification

Net Wiz

Available on 10/100-T chassis port

Detect distance to open/short, wire cross, impedance mismatch

Network device discovery

Auto ping verification

Optical Power Meter

Universal Connector

Calibrated Wavelengths: 850nm, 1310nm, 1490nm, 1550nm

Measurement Range:-50 dBm to +25 dBm

Resolution: 0.1 dBm

Advanced PON Power Meter

Simultaneously measures 1310, 1490 and 1550nm

2 dedicated measuring ports (SC or FC type)

1310nm pulsing signal

1490/1550nm with internal filter

Works with industry standard 2x2 coupler (80%/20%)

General Specifications

Size	210 x 100 x 55 mm (H x W x D) (8.25 x 3.75 x 2.25 in)
Weight	Less than 1 kg (less than 2.2 lbs)
Battery	LiIon smart battery 2400 mAh 10.8VDC
AC Adapter	Input: 100-240 VAC, 50-60 Hz Output: 15VDC, 3.5A
Operating Temperature	-10°C to 45°C (14°F to 113°F)
Storage Temperature	-20°C to 70°C (-4°F to 158°F)
Humidity	5% to 95% non-condensing
Display	3.5" QVGA 320x240 full color touch screen
Ruggedness	Survives 1.5 m (5 ft) drop to concrete on all sides
Water-resistance	Water resistant - may be used in heavy rain
Interfaces	USB 2.0 Host and Client, RJ45 10/100T Ethernet, Bluetooth 2.0 (optional)
Languages	Multiple languages can be supported

Ordering Information

Z01-00-007P	VePAL LX100+ Handheld LAN Test Set
Interfaces/Test Options	
499-05-053	Ethernet Cable Fault Locator
Z66-00-006P	Optical Power Meter Option
Additional Options (via USB, 10/100 Base-T Management Port)	
499-05-003	Remote Control
499-05-008	IPTV Expert
499-05-102	VoIP Check
Z33-00-001	VoIP Expert, incl. VoIP Check
Z33-00-002	NetWiz, incl. Ethernet Cable Fault Locator Option
Z88-00-001G	WiFi Wiz, incl. USB WiFi Adaptor
Z88-00-001P	VoIP Call Expert, incl. VoIP USB Adaptor & Earplug
Recommended Accessories	
A02-00-001G	Car Adaptor
C02-00-002G	Carrying Pouch
Z77-00-006G	LCD Protective Film (Pack of 5)
Replacement Items	
403-15-001G	Top Connector Cover Hinge (Pack of 5)
405-02-001G	Screen Protector
405-02-002G	Top Connector Cover
A01-00-001G	AC Adaptor
B02-03-002G	Battery Pack
C01-00-001G	Carrying Case (Basic)
C03-00-001G	Shoulder Strap
F02-00-001G	Ethernet Cable RJ45 to RJ45 2 m (6 ft)
F04-00-001G	Power Cord - US 2 m (6 ft)
F04-00-002G	Power Cord - EU 2 m (6 ft)
F04-00-003G	Power Cord - UK 2 m (6 ft)
Z77-00-001G	Stylus with String (Pack of 5)



VeEX Inc.
2255, Martin Ave., Suite G,
Santa Clara, CA 95050, USA
Tel: +1.408.970.9090
Fax: +1.408.970.9099
www.veexinc.com
customers@veexinc.com

© 2009 VeEX Inc. All rights reserved.
VeEX is a registered trademark of VeEX Inc. The information contained
in this document is accurate. However, we reserve the right to change
any contents at any time without notice. We accept no responsibility for
any errors or omissions. In case of discrepancy, the web version takes
precedence over any printed literature.
D05-00-030P A00 2009/05